

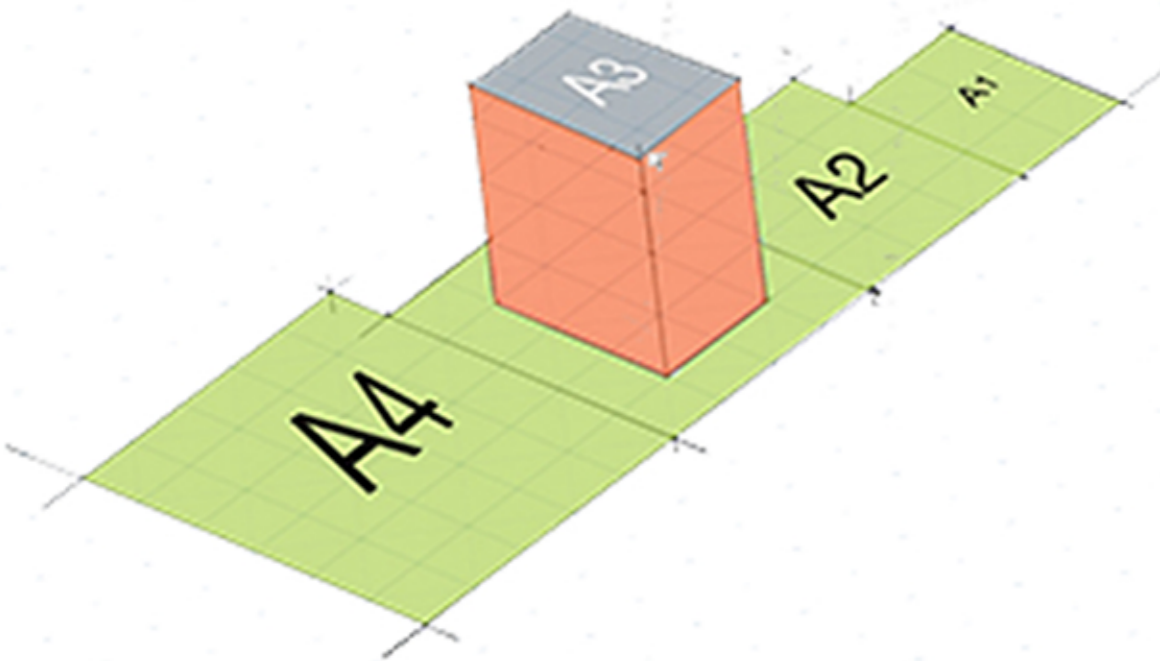
CONCEPT

GOAL OF THE DESIGN

OPEN GREEN SPACES

SOCIAL COLLABORATION

SUSTAINABLE



Plot chosen for the Design Proposal.
150 sq.m

These are the houses which are easy to construct and dismantle . They can be built in a short span of time with a nominal cost, they produce less wastage and doesnot harm the environment.

Concept : [RE] - Covering the Skyline.



Craggy Terrain

+

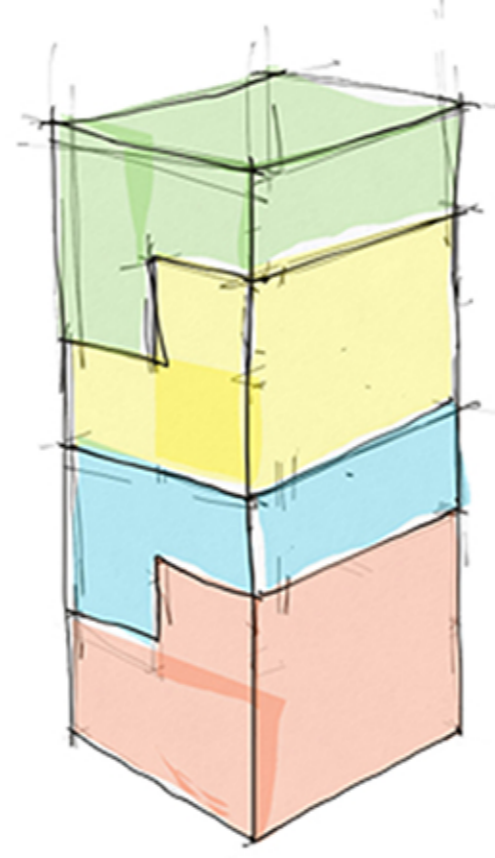


Buddhist Viharas

=

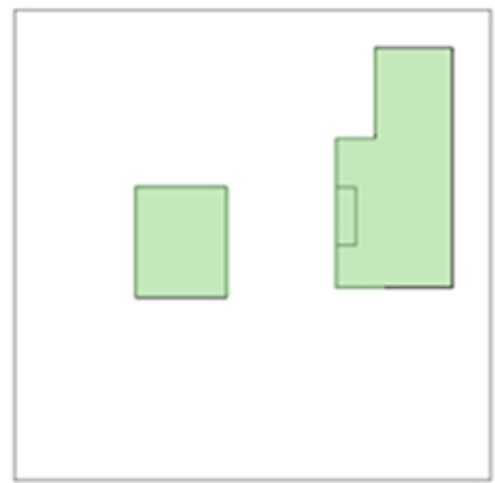


Proposal.

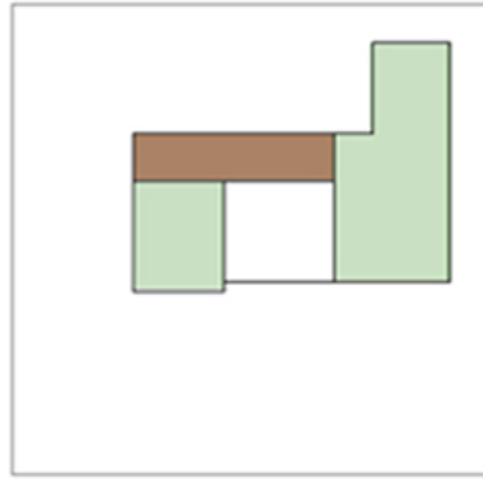


Not Restricted One Floor

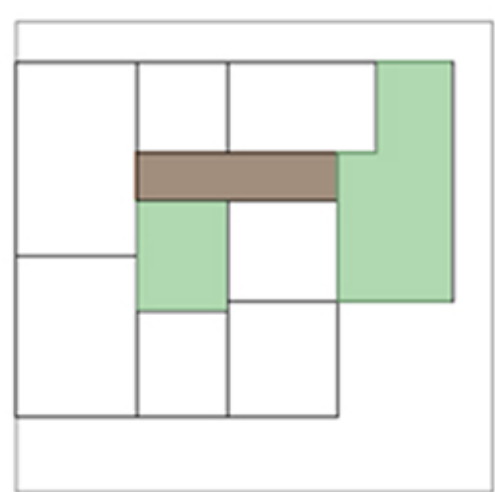
PLANNING CONCEPTS :



Identifying Open Spaces.



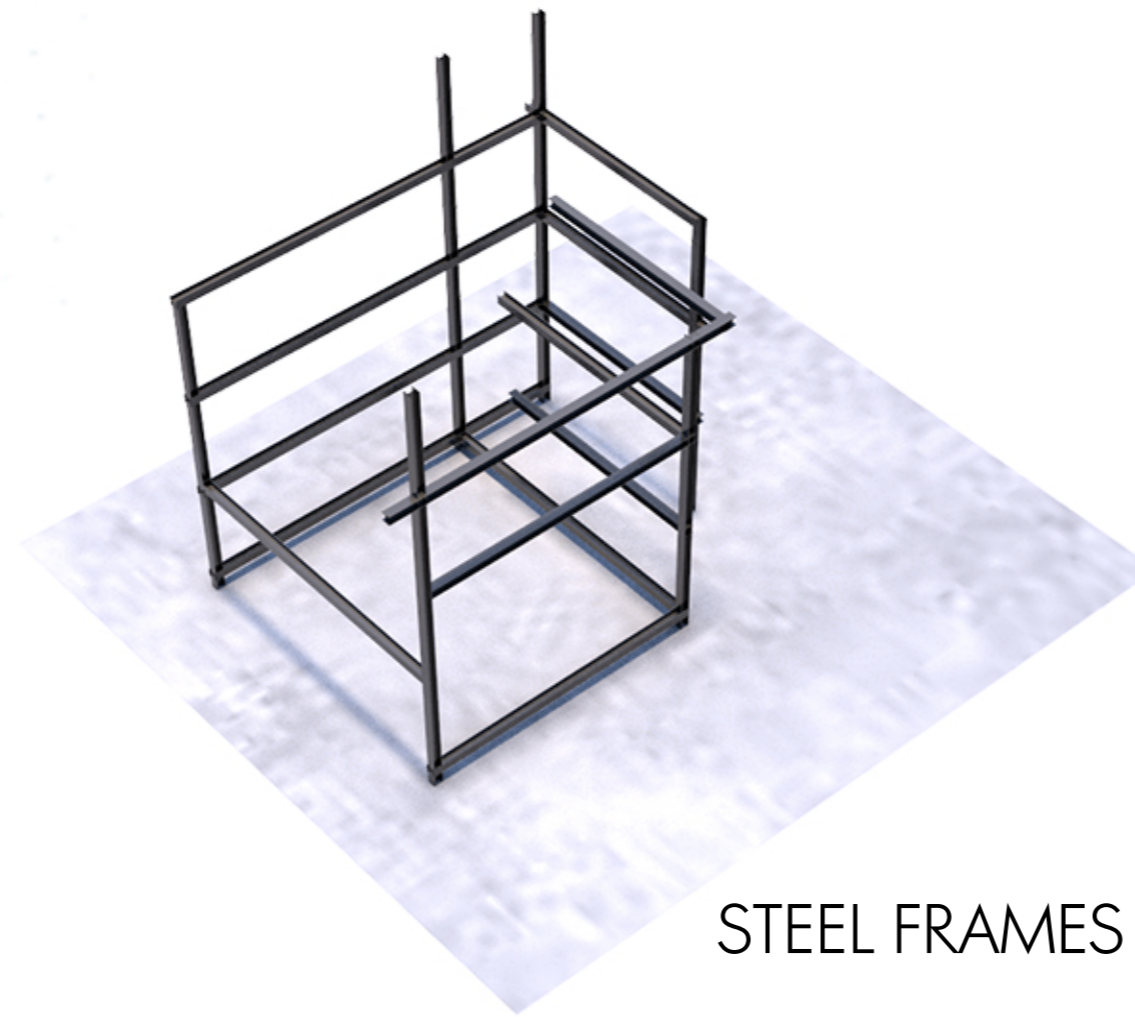
Connecting Edible Spaces through a common corridor.



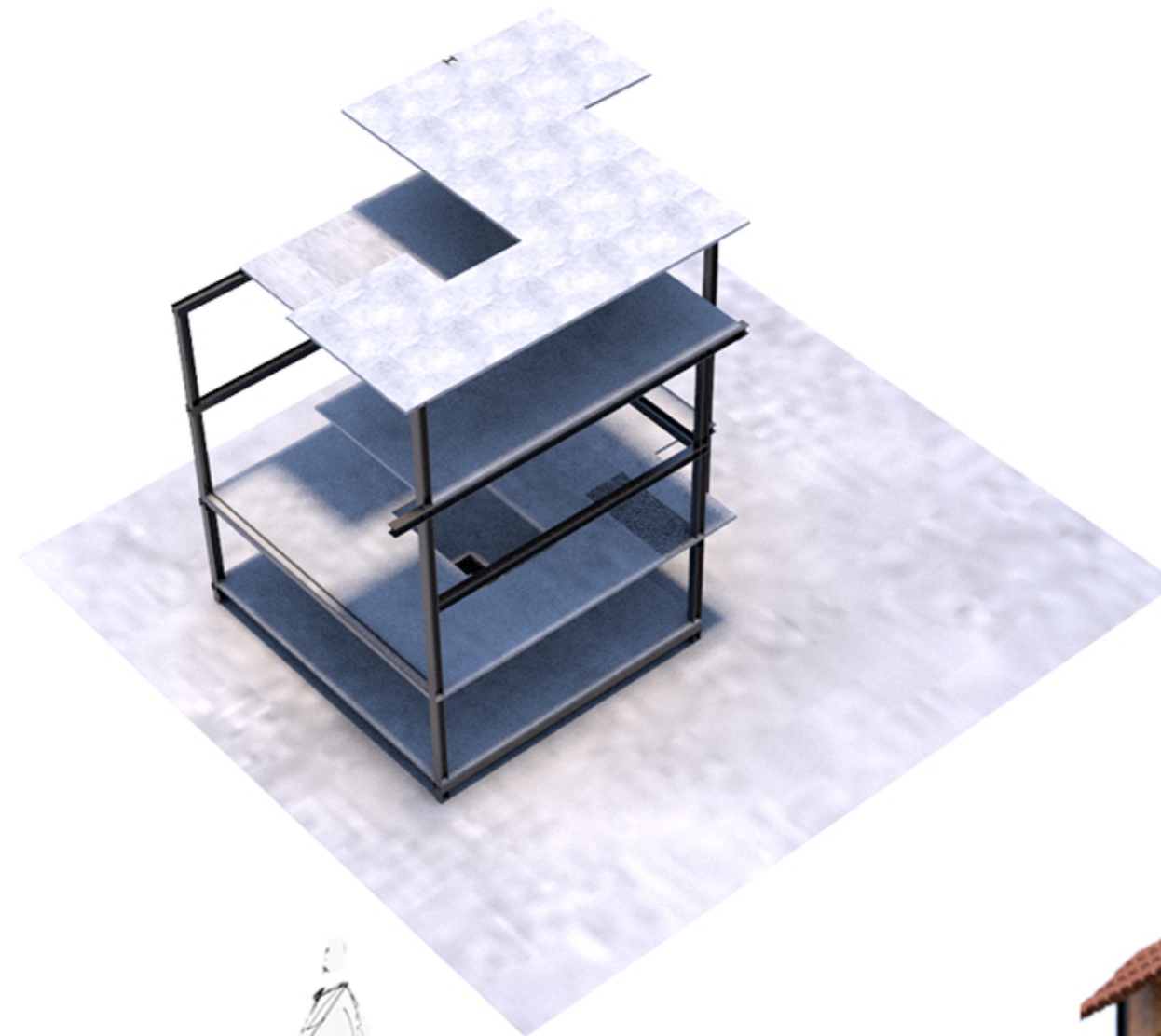
Zoning the Other Spaces around these Spaces.



Creating a Community Space for Gathering .



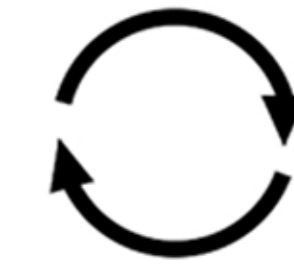
STEEL FRAMES



FLEXIBLE PLANNING

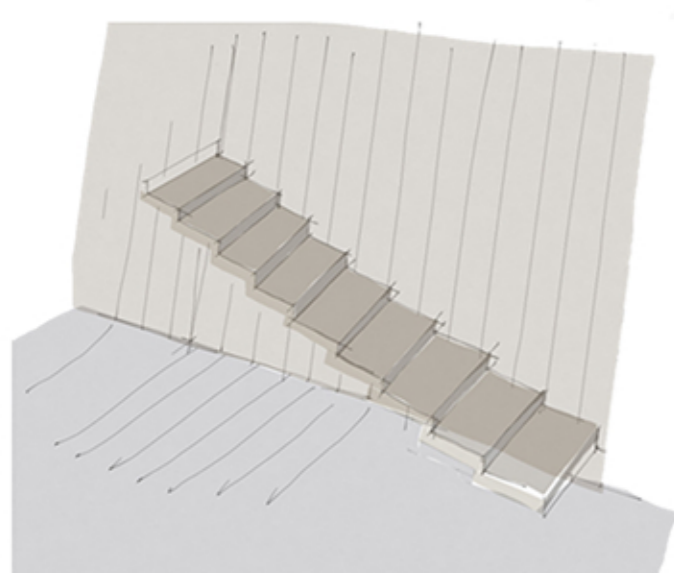
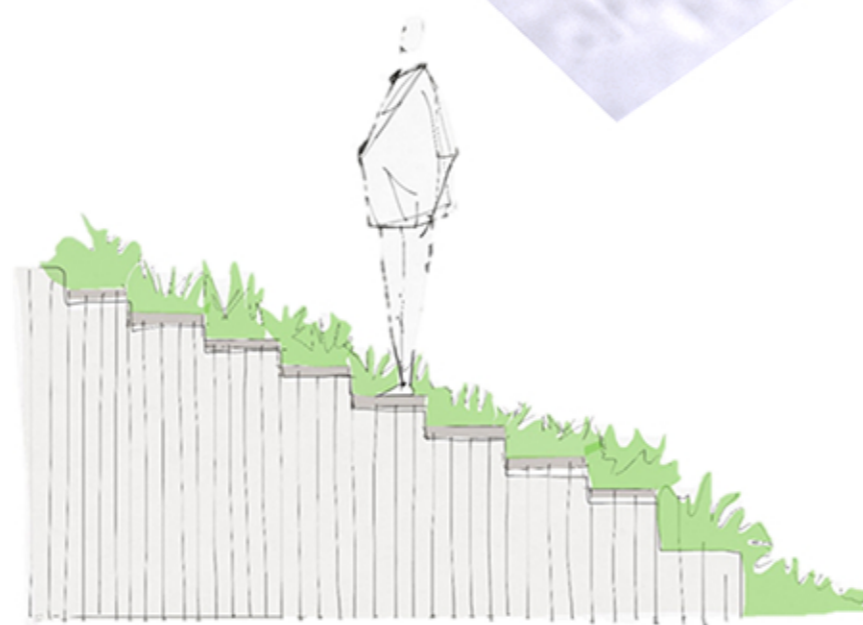


The Spaces have been planned in such a manner that they donot compromise on the vastu even when are flipped and rotated.

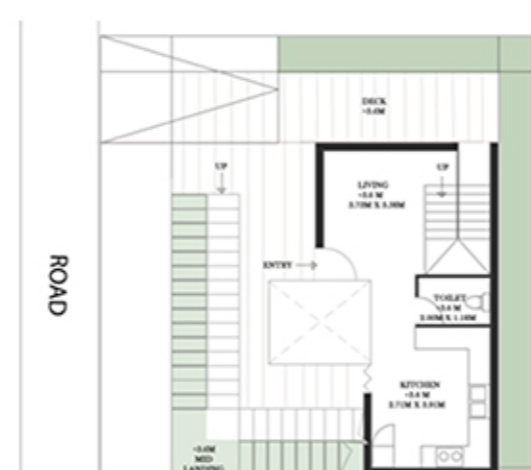


+

=



GREEN BELT





DRESSING ROOMS



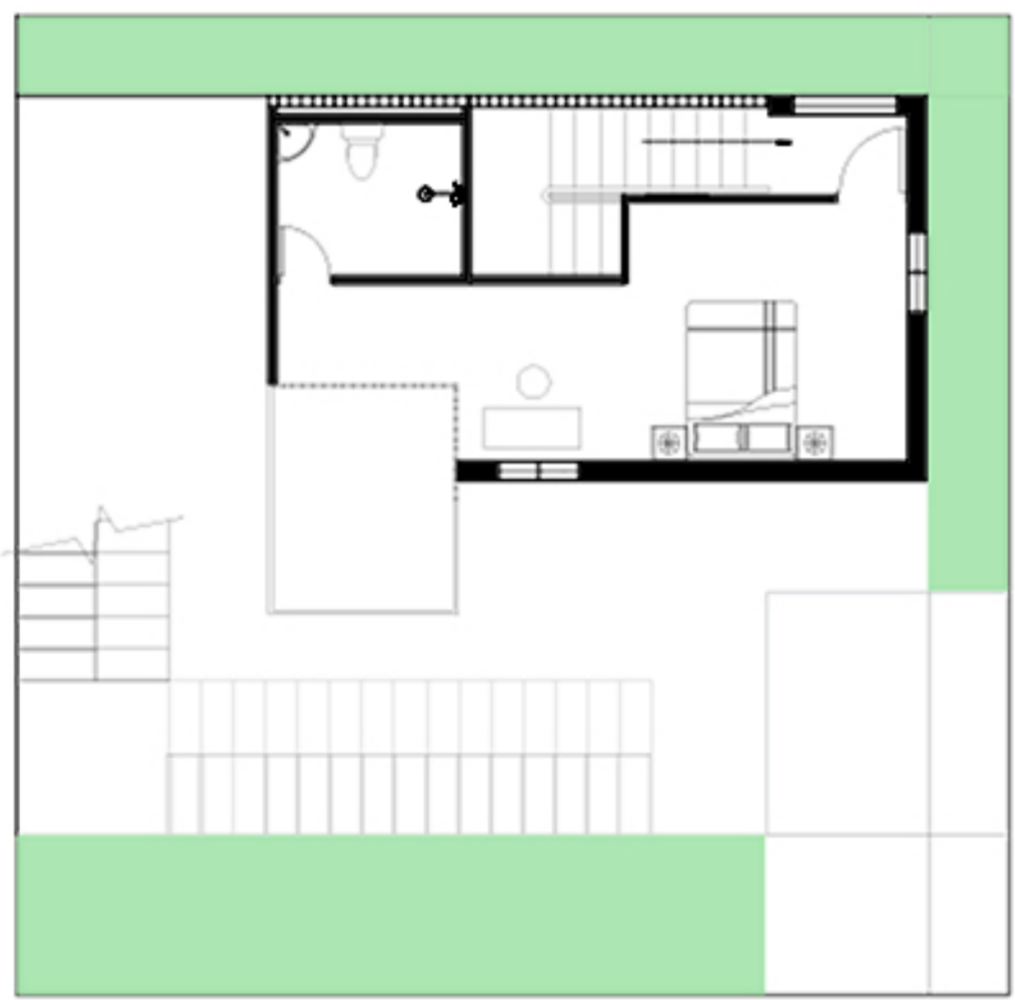
ROAD

GROUND FLOOR PLAN
SCALE 1:100



ROAD

FIRST FLOOR PLAN
SCALE 1:100



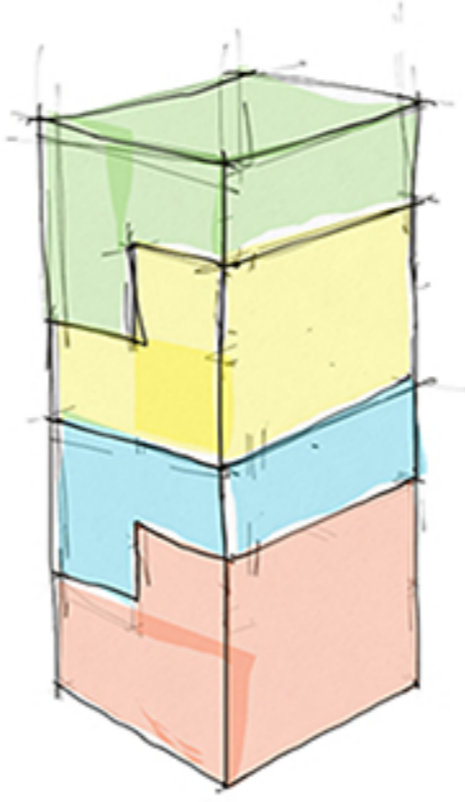
ROAD

SECOND FLOOR PLAN
SCALE 1:100



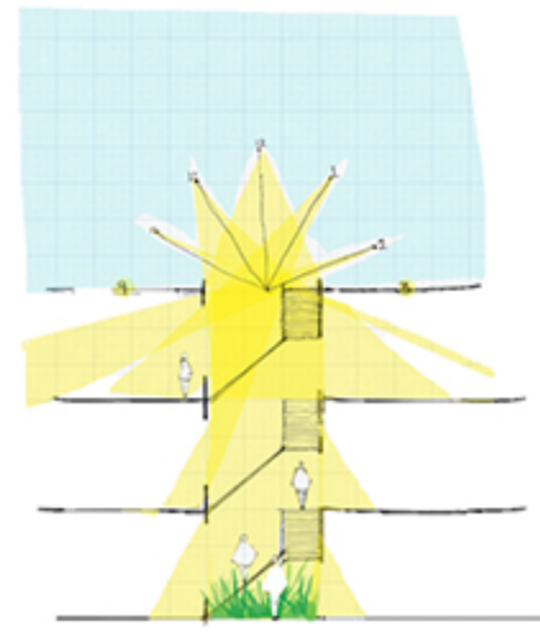
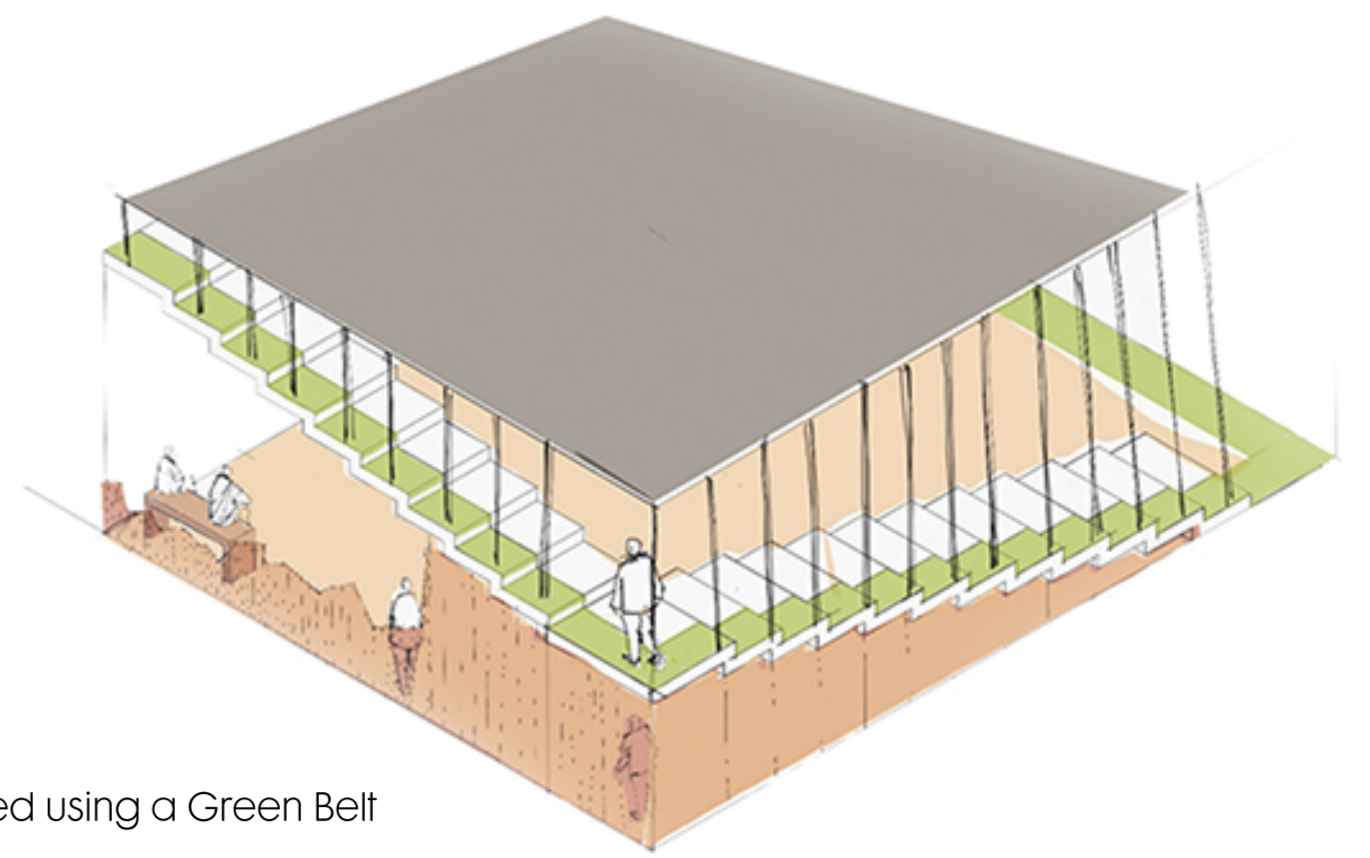
ROAD

THIRD FLOOR PLAN
SCALE 1:100

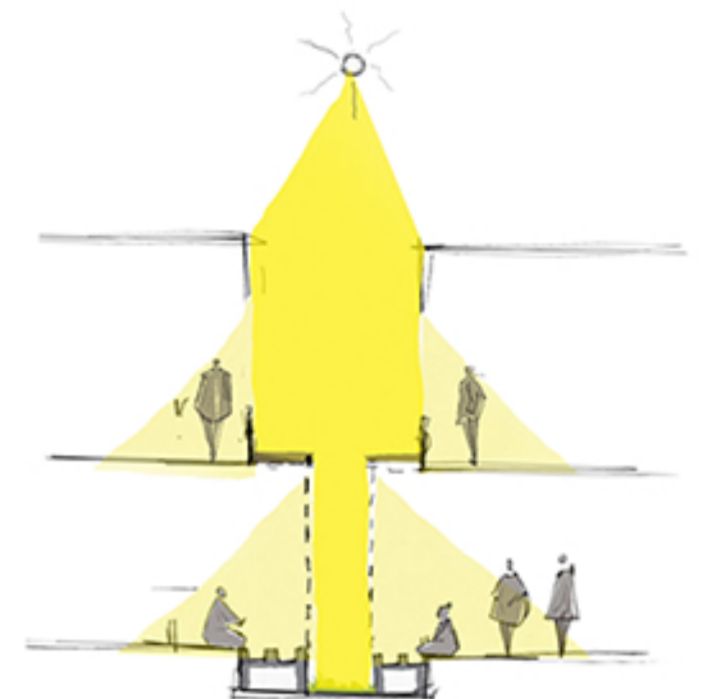


All the units are United using a Green Belt

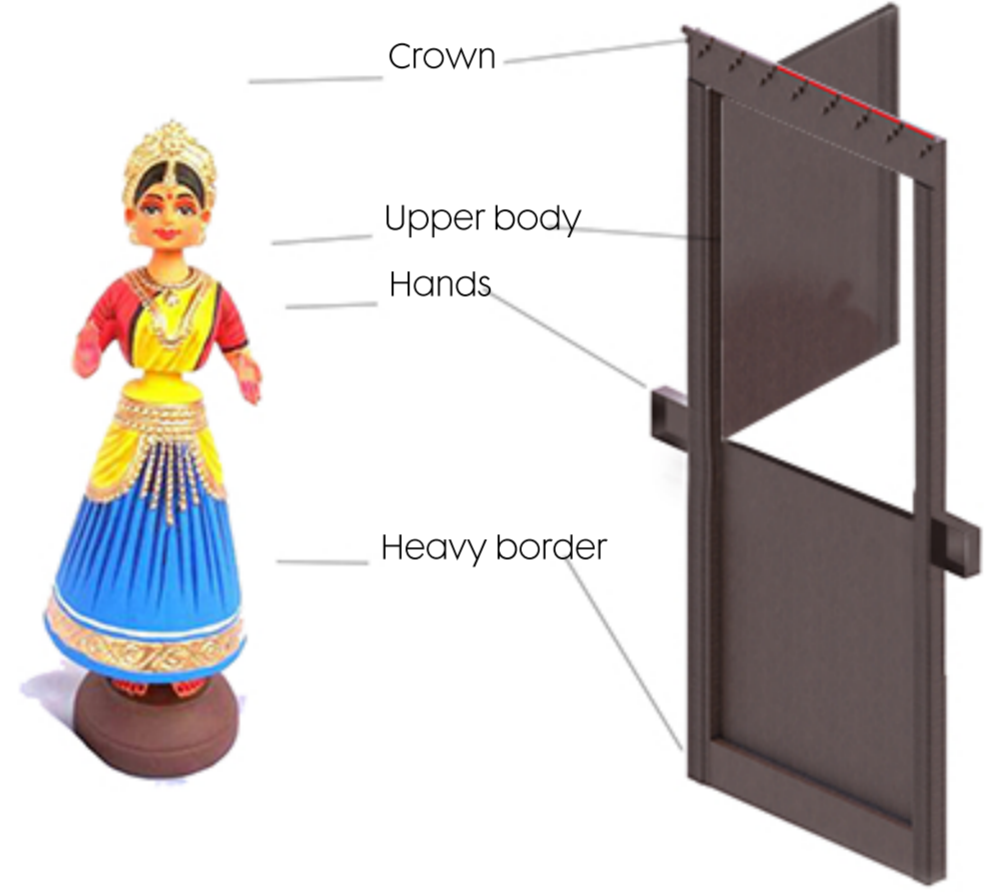
GREEN BELT



They give the residents of a home a private outdoor space, which is secure and usable throughout the day. With its natural ventilation, a courtyard helps the house stay appropriately warm or cool without the need for heaters and air conditioners. In a warm climate, a courtyard can bring down the house's tem-

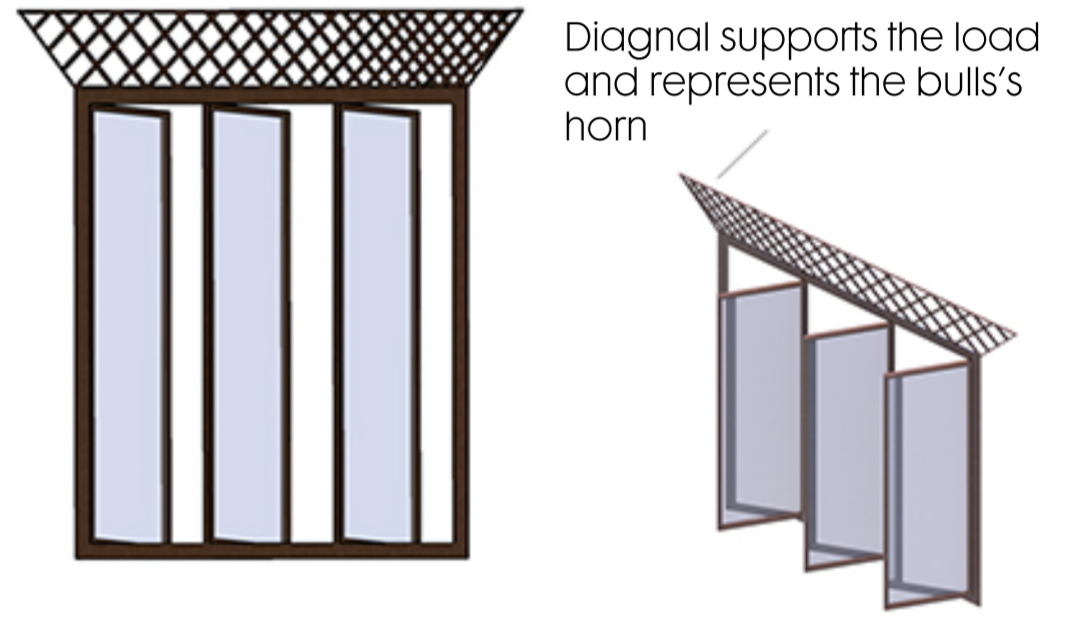


COURTYARD

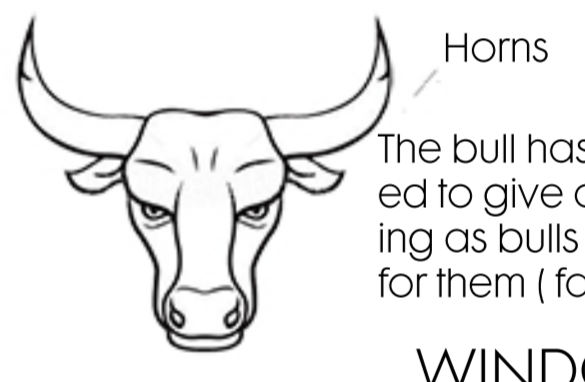


The Kundanpali toys have been analysed and incorporated in door.

DOOR

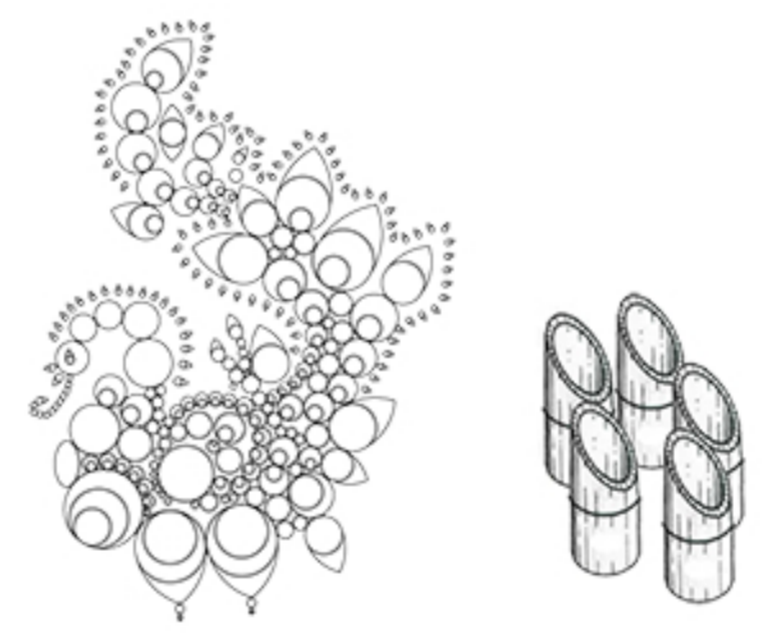


Diagonal supports the load and represents the bulls' horn

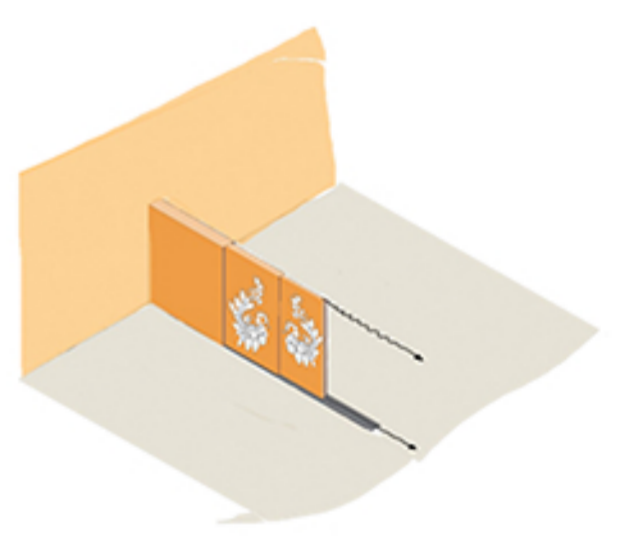


The bull has been abstracted to give a sense a belonging for them (farmers) are a part

WINDOW



Traditional pattern is replicated Using bamboo lateral splices on the retractable doors.



Retractable walls are given to make the floor plan as an open floor plan as they can change an entirely private space as a semi public space. providing opportunities for expanding and dividing the space as per situation.

RETRACTABLE WALL

